



QUICKBOOKS DESKTOP 2017 STUDENT GUIDE

---

Lesson 12

**Payroll with QuickBooks**

**Copyright**

Copyright 2017 Intuit, Inc.  
All rights reserved.

Intuit, Inc.  
5601 Headquarters Drive  
Plano, TX 75024

**Trademarks**

©2017 Intuit, Inc. All rights reserved. Intuit, the Intuit logo, Intuit ProLine, Lacerte, ProAdvisor, ProSeries and QuickBooks, among others, are trademarks or registered trademarks of Intuit, Inc. in the United States and other countries. Other parties' marks are the property of their respective owners.

**Notice to Readers**

The publications distributed by Intuit, Inc. are intended to assist accounting professionals in their practices by providing current and accurate information. However, no assurance is given that the information is comprehensive in its coverage or that it is suitable in dealing with a client's particular situation. Accordingly, the information provided should not be relied upon as a substitute for independent research. Intuit, Inc. does not render any accounting, legal or other professional advice, nor does it have any responsibility for updating or revising any information presented herein. Intuit, Inc. cannot warrant that the material contained herein will continue to be accurate nor that it is completely free of errors when published. Readers should verify statements before relying on them.

# Table of Contents

**Lesson Objectives..... 4**

**Setup for Payroll..... 5**

**Set Up Employee Payroll Information..... 8**

**Use Employee Defaults to Store Common Information ..... 10**

**Set Up Payroll Schedules ..... 11**

**Add a New Employee ..... 13**

**Run a Payroll Schedule ..... 15**

**View the Paycheck..... 18**

**Print Paychecks after Leaving Pay Employees Window..... 19**

**Print or Email Pay Stubs after Leaving Pay Employees Window..... 20**

**Pay Payroll Taxes..... 22**

**Write a Check for Payroll Taxes ..... 23**

**Payroll with QuickBooks – Review Questions ..... 25**

**Review Activities ..... 27**

*Call or Email us for Correct Answers*

## Lesson Objectives

- Gain an overview of payroll in QuickBooks
- Learn more about payroll setup
- Set up employee payroll information
- Set up payroll schedules
- Practice writing and printing a payroll check
- Learn how QuickBooks tracks your tax liabilities
- Practice paying payroll taxes

# Setup for Payroll

Keep in mind you must subscribe to one of the available QuickBooks Payroll services that work with QuickBooks Desktop in order to run payroll in QuickBooks. However, you can test the features of QuickBooks Payroll using one of the sample companies such as Rock Castle Construction. Do not use this feature for actual payroll as the rates are not accurate.

If you want to turn on or off payroll in a company file, follow the procedure below.



## Step-by-Step: Turn Payroll Off in a Company File

1. Make sure you are signed in to the QuickBooks company as the Admin user. (If other users have been set up on other computers to access the company in multi-user mode, ensure they are not signed in and you are in single-user mode.)
2. From the Edit menu, choose **Preferences** then click **Payroll & Employees** in the left panel.
3. To turn payroll off, click the **Company Preferences** tab and select **No payroll**. To turn payroll on, in the same tab, select either **Full payroll** or **Online payroll**. (If you turn on payroll, you will be able to select the subscription of your choice in the Employees menu.)
4. Click **OK**.

QuickBooks maintains a list for everything that affects the amount on a payroll check and for every company expense related to payroll. This list is called the Payroll Item List. There are payroll items for compensation, taxes, other additions and deductions, and employer-paid expenses. QuickBooks uses payroll items to track individual amounts on a paycheck, and accumulated year-to-date wage and tax amounts for each employee.

Payroll items affect either payroll liabilities or payroll expenses on the Chart of Accounts by default (unless you make changes to their setup). However, you will be able to run detailed reports related to payroll based on the payroll items and how they are used in paychecks and payroll liabilities payments.



## Step-by-Step: View the Payroll Item List

- From the Employees menu of a QuickBooks sample company, choose **Manage Payroll Items** then choose **View/Edit Payroll Item List**. (You must have payroll turned on to see this choice in an actual company.)

ITEM NAME	TYPE	AMOUNT	LIMIT	TAX TRAC...	PAYABLE TO	ACCOUNT ID
Salary	Yearly Salary			Compensa...		
Sick Salary	Yearly Salary			Compensa...		
Vacation Salary	Yearly Salary			Compensa...		
Overtime Rate	Hourly Wage			Compensa...		
Regular Pay	Hourly Wage			Compensa...		
Sick Hourly	Hourly Wage			Compensa...		
Vacation Hourly	Hourly Wage			Compensa...		
Bonus	Bonus	0.00		Compensa...		
Mileage Reimb.	Addition	0.45		Compensa...		
Health Insurance	Deduction		-1,200.00	None		
Workers Compensation	Company C...			None	State Fund	
Advance Earned Incom...	Federal Tax			Advance El...	Great State...	00-7904153
Federal Unemployment	Federal Tax	0.6%	7,000.00	FUTA	Great State...	00-7904153
Federal Withholding	Federal Tax			Federal	Great State...	00-7904153
Medicare Company	Federal Tax	1.45%		Comp. Med...	Great State...	00-7904153
Medicare Employee	Federal Tax	1.45%		Medicare	Great State...	00-7904153

Payroll Item Activities Reports  Include inactive

- Close the Payroll Item List.

### NOTES

If you need to add a payroll item after you've set up payroll in QuickBooks, use the following procedure.



## Step-by-Step: Add a Payroll Item

1. From the Employees menu, choose **Manage Payroll Items** then choose **New Payroll Item**.
2. Select **Custom Setup** then click **Next**.
3. QuickBooks displays the *Add new payroll item* window, which walks you through the payroll item setup process.

**Add new payroll item**

**Payroll item type**

Select the type of payroll item you want to create.

- Wage (Hourly Wages, Annual Salary, Commission, Bonus)
- Addition (Employee Loan, Mileage Reimbursement)
- Deduction (Union Dues, 401(k) deferral, Simple IRA, HSA)
- Company Contribution (Employer 401(k) matching contribution, HSA contribution)
- Federal Tax (FUTA, Social Security, Medicare)
- State Tax (State Withholding, SDI, SUI)
- Other Tax (Local Tax, Misc. State Tax)

Back Next Finish Help Cancel

4. Select the type of payroll item you want to create then click **Next**.
5. Follow the onscreen instructions to create the payroll item.
6. When you are done, click **Finish**.
7. Close the Payroll Item List.

## NOTES

# Set Up Employee Payroll Information

QuickBooks calculates payroll for each employee on the basis of that employee's pay rate, marital status, exemptions and so on. The Employee list stores general information about each employee as well as payroll information.



## Step-by-Step: View Information Stored in the Employee List

1. Click **Employees** on the icon bar to open the Employee Center.
2. Select the employee you wish to view from the list then right-click and select **Edit Employee**.
3. Click the **Address & Contact** tab to enter the employee's address, phone number and emergency contact details.
4. Click the **Additional Info** tab to access the employee ID or account number, billing rate level and custom fields.
5. Click the **Payroll Info** tab to set up the employee pay schedule, additions, deductions and company contributions.
6. Use the buttons on this tab to access additional information for direct deposit, taxes and sick/vacation pay.

INFORMATION FOR **Dan T. Miller**

**Personal** | PAYROLL SCHEDULE: **Biweekly** | **Direct Deposit** | **Taxes...**

**Address & Contact** | PAY FREQUENCY: **Biweekly** | **Sick/Vacation...**

**Additional Info** | CLASS:

**Payroll Info**

**Employment Info**

**Workers' Comp**

**EARNINGS**

ITEM NAME	HOURLY/ANNUAL RATE
Salary	41,500.00

Use time data to create paychecks

**ADDITIONS, DEDUCTIONS AND COMPANY CONTRIBUTIONS**

ITEM NAME	AMOUNT	LIMIT
Health Insurance	-25.00	-600.00

Employee is covered by a qualified pension plan

Employee is inactive

**OK** | **Cancel** | **Help**



7. Click **OK** to return to the Edit Employee window from the additional information boxes.
8. Click **OK** again to return to the Employee Center

## **NOTES**

# Use Employee Defaults to Store Common Information

QuickBooks stores a wealth of information about each employee, but it doesn't require you to enter the same information over and over. When you have information that applies to most of your employees, you can enter it into your employee defaults. Then when you add an employee, QuickBooks automatically fills in the information stored with those employee defaults. You will need to add or change any information that is different for a particular employee.



## Step-by-Step: View Employee Defaults

1. From the Employee Center, choose **Change New Employee Default Settings** from the Manage Employee Information menu button.

2. Set the default pay schedule, earnings items, etc. from the window.
3. Use the Taxes button to set up the default state/federal tax settings.
4. Click **OK** to close the Taxes Defaults window.
5. Click **Sick/Vacation** to modify the default settings then **OK** to close it.
6. Click **OK** to close the Employee Defaults window.

## Set Up Payroll Schedules

You can set up payroll schedules to group employees with the same pay frequency (daily, semi-monthly, bi-weekly and monthly). You define how often you pay your employees, which date their paycheck is due and which day you run payroll. QuickBooks calculates your upcoming payroll schedule so you can pay your employees on time.

Using payroll schedules is a quick and convenient way to pay your employees each pay period. You set up the payroll schedule one time, assign the payroll schedule to the appropriate employees and QuickBooks calculates the due dates for each upcoming pay period.

You do not need payroll schedules to run payroll, however. You can run payroll without them by running **Unscheduled Payroll** or paying an employee a termination check.



### Step-by-Step: Define a Payroll Schedule

1. From the Employees menu, choose **Add or Edit Pay Schedules**.
2. Click the **Payroll Schedule** menu button at the bottom left then choose **New**.

The information you provide will be used to create a payroll schedule. [What is a payroll schedule?](#)  
You can set up multiple payroll schedules if you need to. [Why do I need multiple schedules?](#)

**Tell us how you'll be processing payroll using QuickBooks Desktop:** [How do I set up a payroll schedule?](#)

What do you want to name this payroll schedule? (e.g., "Weekly", "Biweekly", "Monthly", etc)

How often will you pay your employees on this schedule?

What is the pay period end date?

What date should appear on paychecks for this pay period?

What day should appear on paychecks for this pay period?

The following is based on the information supplied above:  
**You pay your employees on the same day as the pay period end date in this payroll schedule.**  
The paycheck date for the current month is 12/31/2021 for the pay period ending on 12/31/2021.

Schedule is inactive

3. Enter a name for your payroll schedule in the *What do you want to name this payroll schedule?* field.
4. Press **Tab** and select the pay frequency.
5. Press **Tab** and select the pay period end date for the next period you wish to run payroll.
6. Press **Tab** and select the date that should appear on the checks for the next period you wish to run payroll.
7. Press **Tab** and select the day that should appear on the checks for the next period you wish to run payroll.
8. Click **OK**.
9. Repeat as needed to set up your pay schedules.
10. Close the Payroll Schedule List.

Now that you've set up the pay schedules, you can assign each employee to the appropriate pay schedule.



### Step-by-Step: Assign a Pay Schedule

1. From the Employees menu, choose **Employee Center**.
2. Click the **Employees** tab in the left section.
3. Right-click on the employee you wish to assign a pay schedule to then select **Edit Employee**.
4. In the Edit Employee window, choose the **Payroll Info** tab.
5. From the Payroll Schedule drop-down list, select the pay schedule you wish to assign.
6. Click **OK**.
7. Repeat the steps for each employee to assign the proper pay schedules.

### NOTES

# Add a New Employee



## Step-by-Step: Add a New Employee

1. With the Employee Center displayed, click **New Employee** at top left.
2. Enter the corresponding information in the Personal, Address & Contact and Additional Info fields.
3. In the Payroll Info tab:
  - Assign the **Payroll Schedule** from the drop-down list
  - Choose the earning items that apply to this employee in the Earnings grid (e.g., salary, hourly, overtime, etc.)
  - Choose any items that apply to the employee from the Additions, Deductions and Company Contributions grid
  - Click the **Direct Deposit** button to set up direct deposit information
  - Click the **Taxes** button to set up federal withholding and state tax information
  - Click the **Sick/Vacation** button to add any sick/vacation time accrual information

INFORMATION FOR **Michael E. White**

Personal

Address & Contact

Additional Info

**Payroll Info**

Employment Info

Workers' Comp

PAYROLL SCHEDULE: Biweekly

PAY FREQUENCY: Biweekly

CLASS: [Empty]

Buttons: Direct Deposit, Taxes..., Sick/Vacation...

EARNINGS	
ITEM NAME	HOURLY/ANNUAL RATE
Regular Pay	15.00

ADDITIONS, DEDUCTIONS AND COMPANY CONTRIBUTIONS		
ITEM NAME	AMOUNT	LIMIT
Health Insurance	-20.00	-1,200.00

Use time data to create paychecks

Employee is covered by a qualified pension plan



**IMPORTANT:** *If you would like the time automatically entered from timesheets, place a check in the box labeled Use time data to create paychecks.*

4. Enter remaining information in the Employment Info and Workers' Comp tabs.
5. Click **OK**.

## **NOTES**

# Run a Payroll Schedule

QuickBooks lets you print payroll checks in a batch based on payroll schedules.



## Step-by-Step: Run a Payroll Schedule

1. In the Employee Center, click the **Payroll** tab in the left section.
2. In the right section, click the **Pay Employees** tab.
3. In the Pay Employees section, choose the **Biweekly** pay schedule.
4. Click the **Start Scheduled Payroll** button. (If the Special Paycheck Situation window pops up, click **Continue**.)
5. Specify the last date of the pay period, check date and bank account from which paychecks will be produced, and whether the checks are to be printed or handwritten. If they are handwritten, specify the first check number.

**Enter Payroll Information**

1 Enter Payroll Information → 2 Review & Create Paychecks → 3 Print & Distribute Paychecks

How do I pay my employees?

**PAYROLL INFORMATION**

PAYROLL SCHEDULE: **Biweekly**      PAY PERIOD ENDS: **12/31/2021**      BANK ACCOUNT: **10100 - Checking**

EMPLOYEES SELECTED TO PAY: **4**      CHECK DATE: **12/31/2021**      BANK ACCOUNT BALANCE: **48,687.70**

**CHECK OPTIONS**

Print paychecks on check stock      [First Check#](#)

Handwrite & Assign check numbers     

           SORT BY: **Employee Name**     

✓ EMPLOYEE	REGULAR PAY	OVERTIME R...	SICK HOURLY	VACATION H...	SALARY	TOTAL HOURS
✓ Dan T. Miller						
✓ Elizabeth N. Mason	80:00					80:00
✓ Gregg O. Schneider	80:00					80:00
✓ Michael E. White						

How do I use this window to enter payroll information?

6. Select the employees you wish to pay by ensuring there is a checkmark next to their name in the grid.
7. Click **Continue**.

The screenshot shows the 'Review and Create Paychecks' window with the following details:

**PAYROLL INFORMATION**

PAYROLL SCHEDULE: Biweekly  
 PAY PERIOD ENDS: 12/31/2021  
 BANK ACCOUNT: 10100 - Checking  
 NUMBER OF PAYCHECKS: 4  
 CHECK DATE: 12/31/2021  
 BANK ACCOUNT BALANCE: 48,687.70

**CHECK OPTIONS**

Print paychecks on check stock (First Check#: 491)  
 Handwrite & Assign check numbers

[Open Paycheck Detail...](#)

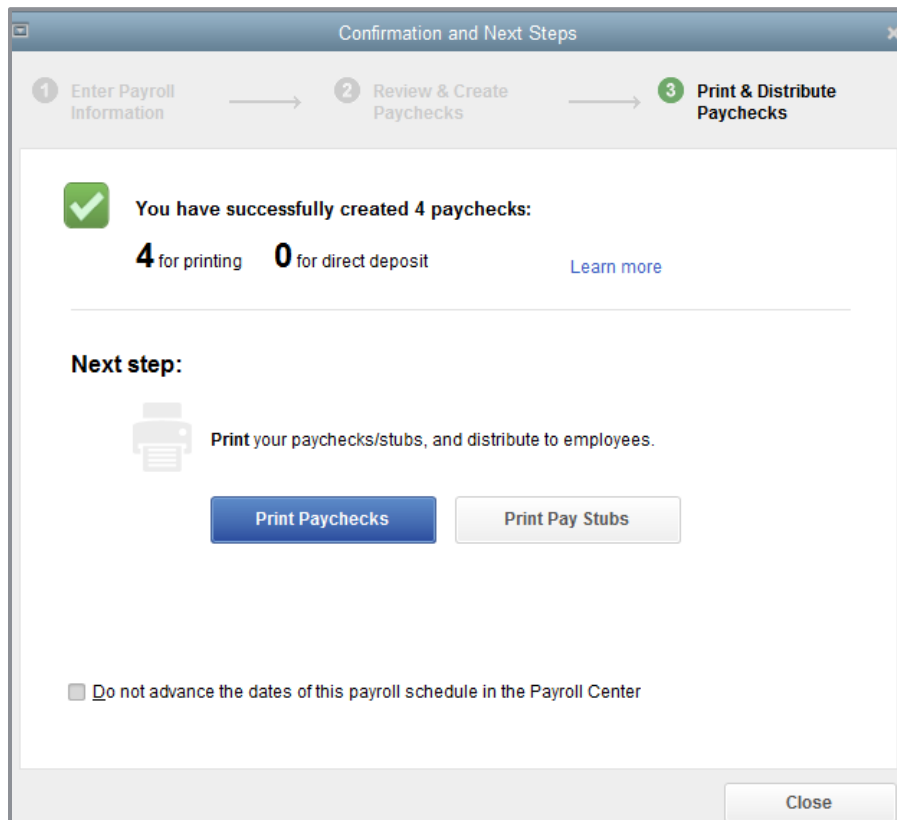
Employee	Gross Pay	Taxes	Deductions	Net Pay	Employer Tax	Contributions	Total Hours	Direct De
Dan T. Miller	1,596.15	-213.90	0.00	1,382.25	122.11	266.11		
Elizabeth N. Mason	1,180.00	-234.67	0.00	945.33	90.27	121.18	80:00	
Gregg O. Schneider	1,380.00	-290.85	-12.50	1,076.65	105.57	13.11	80:00	
Michael E. White	150.00	-18.83	-20.00	111.17	20.26	0.00	10:00	
	4,306.15	-758.25	-32.50	3,515.40	338.21	400.40	170:00	

Buttons: < Back, Finish Later, Create Paychecks

8. To review all paychecks, click the **Open Paycheck Detail** button or, to review one paycheck, click on the employee's name in the grid.
9. Once you've reviewed all the paychecks you want to review, click **Save & Close** to return to the Review & Create Paychecks window.
10. Click **Create Paychecks**.



QuickBooks creates a payroll check for each employee in the chosen payroll schedule for the correct net amount, showing the deductions in the voucher area. QuickBooks confirms you have created the paychecks. You can then choose **Print Paychecks** (or **Print Pay Stubs** if they are going to be handwritten checks).



11. If you don't want to print the paychecks now, click **Close**.

## NOTES

# View the Paycheck

QuickBooks records payroll checks in your QuickBooks bank account register (whichever bank account you selected when you started to pay these employees). You can see the check by going to the register and opening it the way you open any transaction in a register, but it is easiest to view employee checks from the Employee Center.



## Step-by-Step: View the Paycheck from the Employee Center

1. From the Employees drop-down menu, click **Employee Center**.
2. Click the **Employees** tab in the left section if it isn't already selected.
3. Select the name of the employee whose paycheck you want to view.
4. You'll see a list of recent paychecks for that employee in the Transactions tab in the right section of the Employee Center. Double-click on the paycheck you want to open from the employee's transaction list.

PAYCHECK SUMMARY			
EARNINGS	1,596.15	PAY PERIOD	12/18/2021 - 12/31/2021
ADDITIONS	0.00	HOURS WORKED	0:00
TAXES	-213.90		
DEDUCTIONS	0.00		

5. Click **Save & Close** to close the paycheck.

# Print Paychecks after Leaving Pay Employees Window

You can print paychecks after creating them while still in the Pay Employees area. However, you do not have to print them at that time. You can close the payroll function and print them at any time.

You print paychecks similarly to other QuickBooks checks. If you use voucher checks, QuickBooks prints the payroll item detail in the voucher area. If you don't use voucher checks, you can print a pay stub to give to your employees.



## Step-by-Step: Print Paychecks after you Exit the Pay Employees Window

1. From the File menu, choose **Print Forms** then choose **Paychecks**.
2. Select the bank account that is the source of the paychecks from the Bank Account drop-down.
3. Enter the starting check number from the check stock on which you are printing in the First Check Number field.
4. Make sure there's a checkmark next to all employee names whose paychecks you are going to print then click **OK**.

✓	DATE	EMPLOYEE	AMOUNT
✓	12/31/2021	Dan T. Miller	1,382.25
✓	12/31/2021	Elizabeth N. Mason	945.33
✓	12/31/2021	Gregg O. Schneider	1,076.65
✓	12/31/2021	Michael E. White	111.17

5. If desired, enter the text for a company message to appear on all pay stubs.
6. Click **Print**.

# Print or Email Pay Stubs after Leaving Pay Employees Window

You can print pay stubs after recording paychecks to be handwritten while still in the Pay Employees area. However, you can close the payroll function and print or email them at any time.



## Step-by-Step: Print or Email Pay Stubs after you Exit the Pay Employees Window

1. From the File menu, choose **Print Forms** then choose **Pay Stubs**.
2. Select the bank account that is the source of the paychecks from the Bank Account drop-down.

Select Pay Stubs

Bank Account: 10100 - Checking      Checks Dated: 12/14/2021 thru 03/14/2022

Select Pay Stubs, then click Print or E-mail.      Employee: All Employees

There are 9 Pay Stubs to print for \$9,039.97.

✓	DATE	EMPLOYEE	AMOUNT
✓	12/15/2021	Dan T. Miller	1,299.60
✓	12/15/2021	Elizabeth N. Mason	907.92
✓	12/15/2021	Gregg O. Schneider	1,033.98
✓	12/15/2021	Dan T. Miller	1,350.15
✓	12/15/2021	Elizabeth N. Mason	932.92
	12/15/2021	Gregg O. Schneider	1,062.12
	12/15/2021	Gregg O. Schneider	1,062.12

Show:  Both     Paychecks     Direct Deposit

Company message to be printed on all pay stubs:

Buttons: Preview, Select All, Select None, Preferences, Default Email Text, Print, Email, Close, Help

3. Specify a date range for listing pay stubs.
4. Make sure **All Employees** is selected or, if desired, specify one employee.

5. Place a checkmark next to the employees' paychecks for which you want to print or email a pay stub.
6. If desired, enter the text for a company message to appear on all pay stubs.
7. Click **Print** or **Email**. If you chose Email, you will see a Password Protection screen. Read the information and click **OK**. Follow the prompts to complete any missing employee email addresses.



## NOTES

# Pay Payroll Taxes

If you're about to pay taxes or other liabilities, the Payroll Liabilities Balances report shows how much to pay. Suppose you are ready to make a tax payment and you want to see how much you owe.



## Step-by-Step: Create a Payroll Liabilities Report

1. From the Reports menu, choose **Employees & Payroll** then choose **Payroll Liability Balances**.
2. Select **This Calendar Year** in the Dates cell.
3. Click the drop-down menu in the Show Columns section at the top of report then select **Year** to change the report display.

	BALANCE
<b>Payroll Liabilities</b>	
Advance Earned Income Credit	0.00
Federal Withholding	1,730.00
Medicare Employee	263.25
Social Security Employee	1,125.59
Federal Unemployment	100.90
Medicare Company	263.25
Social Security Company	1,125.59
CA - Withholding	360.66
CA - Disability Employee	49.48
CA - Unemployment Company	107.88
Medicare Employee Addl Tax	0.00
CA - Employee Training Tax	10.00
Health Insurance	182.50
Workers Compensation	1,614.71
<b>Total Payroll Liabilities</b>	<b>6,933.81</b>

4. Close the report.

## NOTES

# Write a Check for Payroll Taxes

When it's time to deposit payroll taxes with your deposit institution, use the Liability Check window to fill out a special type of QuickBooks check for this purpose.



## Step-by-Step: Pay Payroll Liabilities

1. From the Employees drop-down menu, choose **Payroll Taxes and Liabilities** then click **Create Custom Liability Payments**.
2. In the From and Through fields, enter the date range for which you are paying the liabilities.
3. Click **OK**.
4. Complete the information in the Pay Liabilities window to mirror the payment you making:
  - Ensure the proper Bank Account is selected
  - Enter the proper Check Date
  - Place checkmarks next to the liabilities you wish to pay

**Pay Liabilities**

To be printed

Bank Account: 10100 - Checking

Check Date: 12/31/2021

Review liability check to enter expenses/penalties (selected)

Create liability check without reviewing

Buttons: Create, Cancel, Payroll Liabilities Report, Help

SHOW PAYROLL LIABILITIES

Dates: Custom From 01/01/2021 Through 12/31/2021

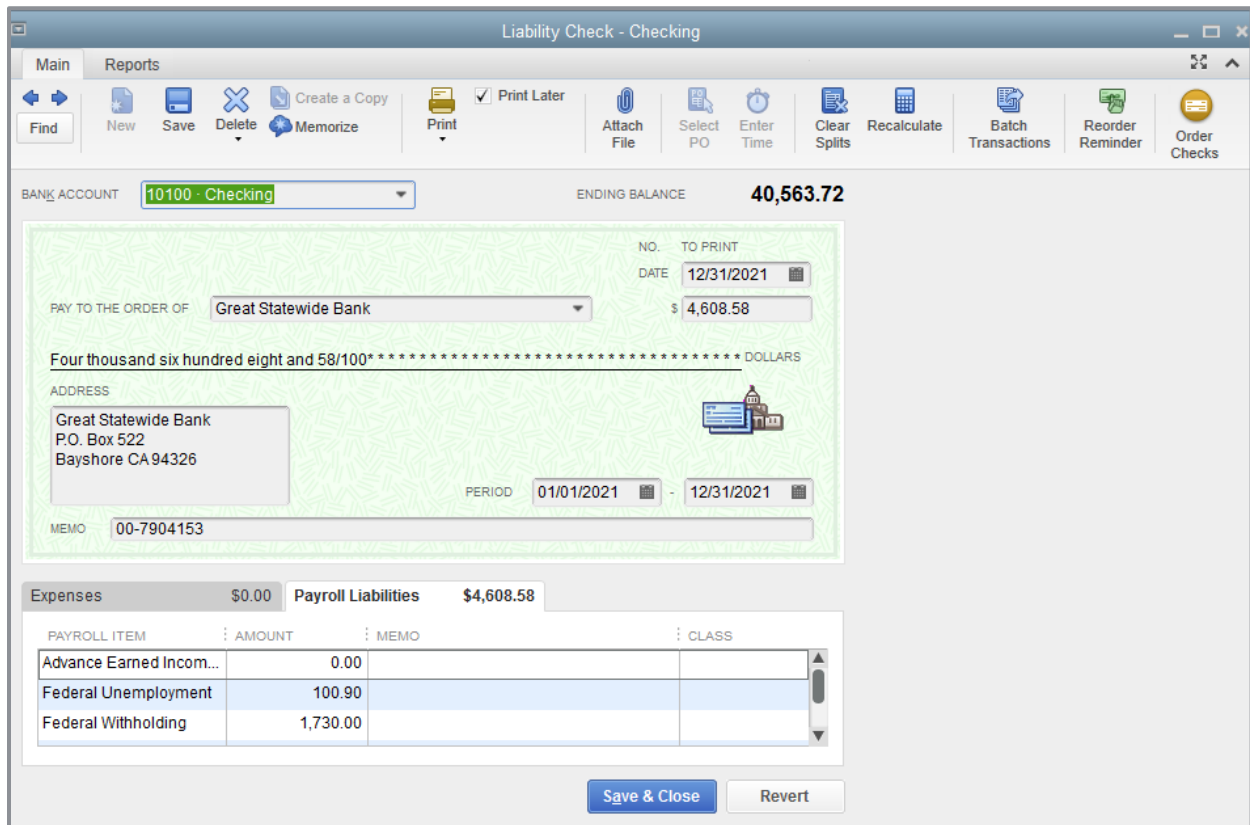
Sort By: Payable To

PAYROLL ITEM	PAYABLE TO	BALANCE	AMT. TO PAY
<input checked="" type="checkbox"/> CA - Employee Training Tax	Employment Development Department	10.00	0.00
<input checked="" type="checkbox"/> CA - Unemployment Company	Employment Development Department	107.88	0.00
<input checked="" type="checkbox"/> CA - Withholding	Employment Development Department	360.66	0.00
<input checked="" type="checkbox"/> Advance Earned Income Credit	Great Statewide Bank	0.00	0.00
<input checked="" type="checkbox"/> Federal Unemployment	Great Statewide Bank	100.90	100.90
<input checked="" type="checkbox"/> Federal Withholding	Great Statewide Bank	1,730.00	1,730.00
<input checked="" type="checkbox"/> Medicare Company	Great Statewide Bank	263.25	263.25
<input checked="" type="checkbox"/> Medicare Employee	Great Statewide Bank	263.25	263.25
<input checked="" type="checkbox"/> Medicare Employee Addl Tax	Great Statewide Bank	0.00	0.00
<input checked="" type="checkbox"/> Social Security Company	Great Statewide Bank	1,125.59	1,125.59
<input checked="" type="checkbox"/> Social Security Employee	Great Statewide Bank	1,125.59	1,125.59
<input checked="" type="checkbox"/> Workers Compensation	State Fund	1,614.71	0.00
		6,933.81	4,608.58

Hide zero balances

Ending Bank Balance: 40,563.72

5. Make sure **Review liability check to enter expenses/penalties** is selected, then click **Create**.



QuickBooks will create one liability check per institution.

6. Click **Save & Close** to record the check.

## NOTES



## Payroll with QuickBooks – Review Questions

1. What is required in order for QuickBooks to calculate payroll in a real company file?  
\_\_\_\_\_
2. Which two accounts are typically linked to payroll items?
  - a. \_\_\_\_\_
  - b. \_\_\_\_\_
3. Which of the following are QuickBooks payroll item types?
  - a. Wage
  - b. Addition
  - c. Deduction
  - d. All of the above
4. What report would you run to determine how much you owe in payroll taxes?  
\_\_\_\_\_
5. What QuickBooks feature would you use to make setting up payroll easier when a number of employees have the same hourly wage, pay period and base deductions?
  - a. Tax tables
  - b. Employee defaults
  - c. Payroll items
  - d. Assisted payroll
6. True or false: Payroll schedules are required to run payroll in QuickBooks.
  - a. True
  - b. False

7. Payroll schedules help you do which of the following?
- a. Group employees with the same pay frequency
  - b. Write bonus checks
  - c. Prepare termination checks
  - d. Pay payroll tax liabilities

*Call or Email us for Correct Answers*

## Review Activities

1. Add a salaried employee to the Employee Center. Enter the employee's personal information, federal and state tax information, and at least one additional paycheck deduction. Assign the employee to the monthly payroll schedule.
2. Run the monthly payroll schedule and process a paycheck for the new employee. View the check in QuickBooks. Open at least one payroll liability account register to see how the paycheck changes the account's balance.
3. Select one of the payroll expense accounts from the Chart of Accounts. Create a QuickReport for that expense account.

